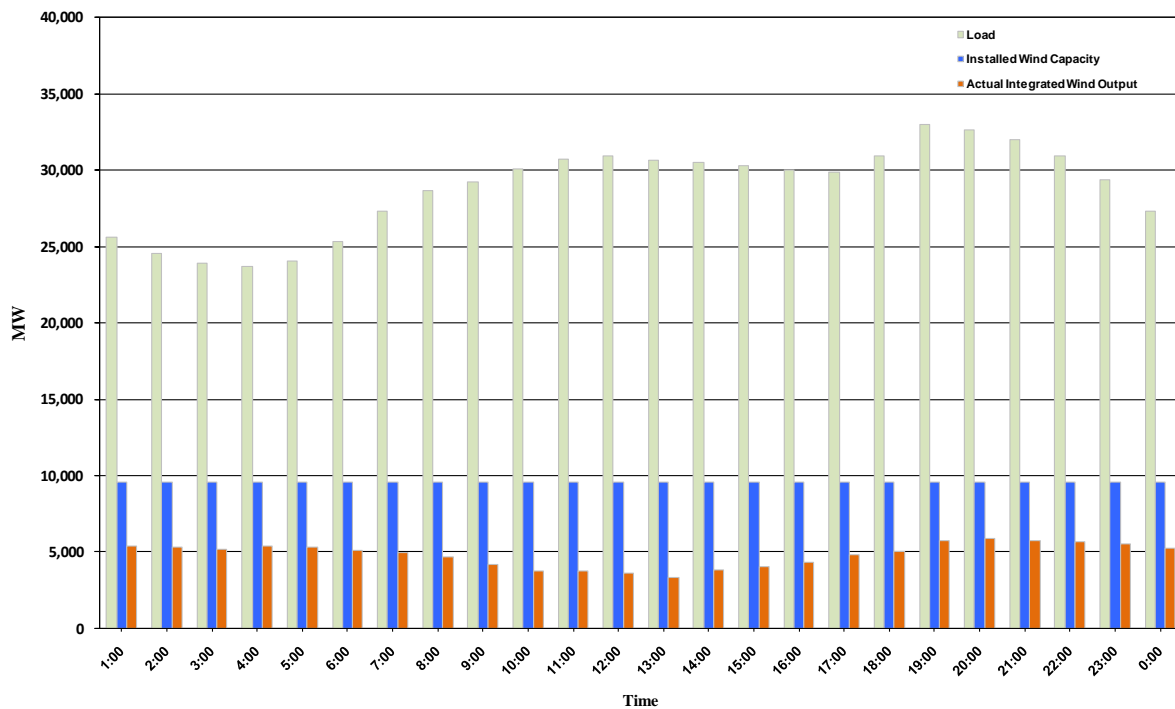




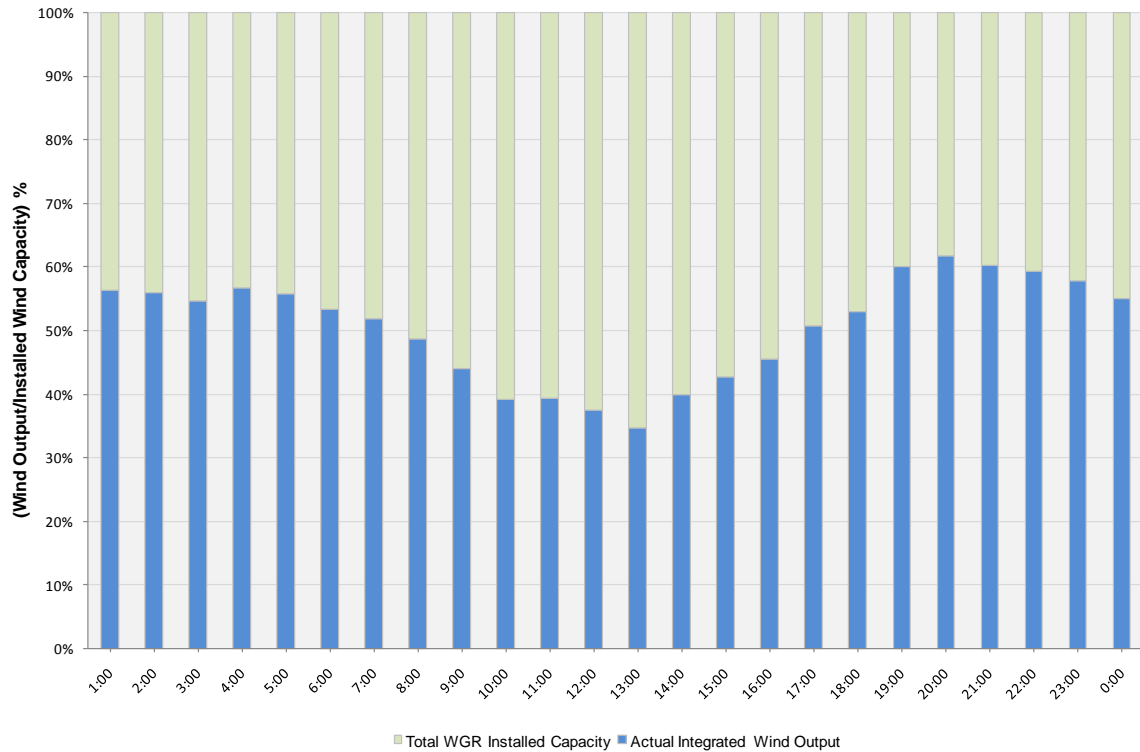
## ERCOT Grid Operations Wind Integration Report: 12/30/10

Peak Load	32,984 MW
Load Peak Hour	19
Wind Record 12/11/10	7,227 MW
Max Wind Value	6,260 MW
Wind Peak Hour	19:27:32
Wind Integration %	19.17

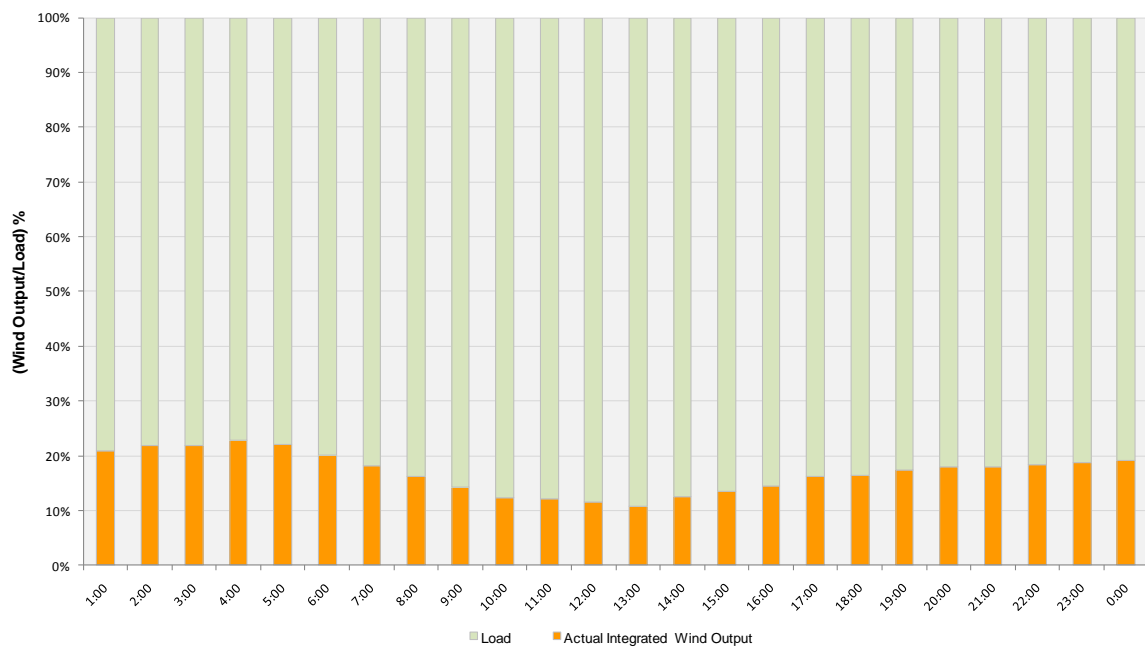
Hourly Average Actual Load vs. Actual Wind Output  
12-30-2010



**Actual Wind Output as a Percentage of the Total Installed Wind Capacity**  
**12-30-2010**



**Actual Wind Output as a Percentage of the ERCOT Load**  
**12-30-2010**



**ERCOT Load vs. Actual Wind Output 12/23/10 - 12/30/10**